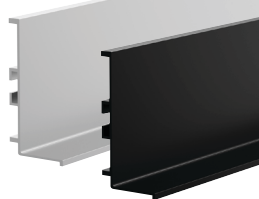
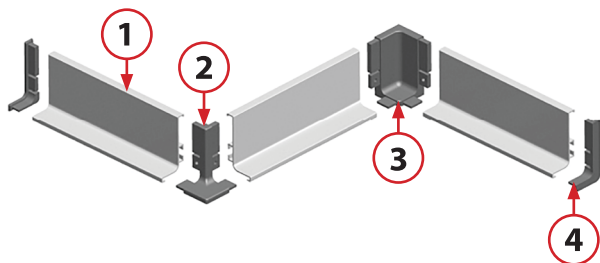


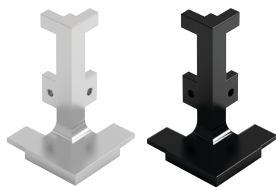
Gola System - "L" Profile

Installed on the top or bottom edge of the carcass as a cabinet handle system

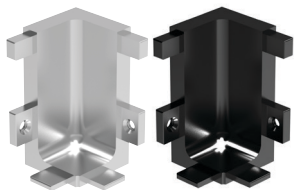
Type	Size (LxWxH)	Finish
"L" Profile	3m x 27,5 x 57,5mm	Aluminium (283) Black (2821)
"L" End Cover	11 x 27,5 x 58,5mm	Silver / Die Cast (284) Black (2822)
90° Inside Corner Joint	38,5 x 38,5 x 57mm	Silver / Die Cast (289) Black (2823)
90° Outside Corner Joint	37 x 37 x 57mm	Silver / Die Cast (290) Black (2824)



1. "L" Profile



2. 90° Outside Corner Joint



3. 90° Inside Corner Joint

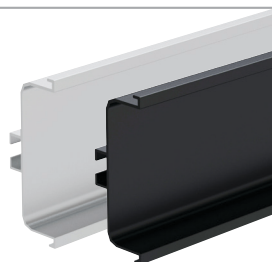
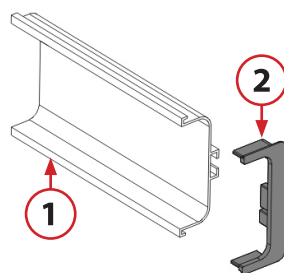


4. "L" End Cover

Gola System - "U" Profile

Installed midway through carcass as a drawer or cabinet handle system.

Type	Size (LxWxH)	Finish
"U" Profile	3m x 27,5 x 73,5mm	Aluminium (285) Black (2825)
"U" End Cover	11 x 29 x 76mm	Silver / Die Cast (286) Black (2826)
Mounting Bracket	35 x 12 x 35mm	White Zinc (287)



1. "U" Profile



2. "U" End Cover



3. Mounting Bracket

DIY Installation Guide Gola System



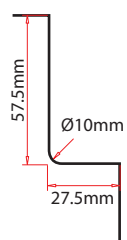
Gelmar

Installation of the Gola System

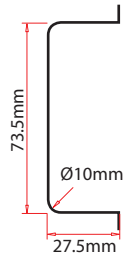
STEP 1

Prepare the carcass for installation

Using your End Cover as a template, mark and cut your carcass sides to fit the Profile.



"L" Profile cutout



"U" Profile cutout

STEP 2

Prepare the Profile for installation

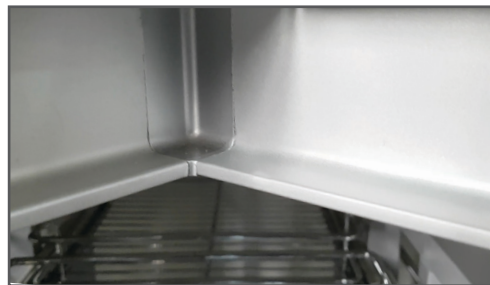
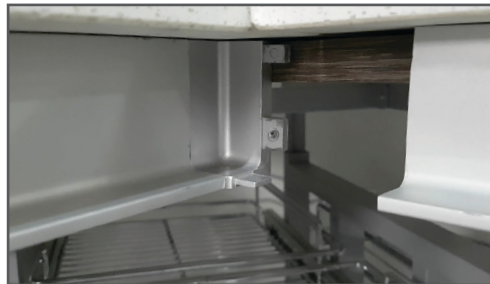
1. Measure and cut your Profile to the required lengths.
2. Slide the Mounting Brackets into the track on the back of the Profile.
Do not tighten the screws on the Mounting Bracket.
4. A Mounting Bracket should be used for every upright on the carcass.



STEP 3

Install Corner Joints

1. Place the Profile on the carcass.
2. Put the Corner Joints in place and join the Profiles.
3. Secure the Corner Joints onto the Profile using 8 x 16mm chipboard screws



STEP 4

Install Profiles

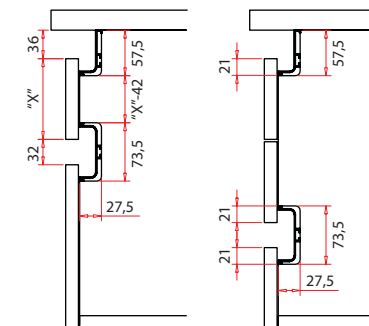
1. Slide the Mounting Brackets into position, flush against the carcass sides.
2. Attach the Mounting Brackets to the carcass using 8 x 16mm chipboard screws
3. Tighten the Mounting brackets onto the Profile.



STEP 5

Install End Cover

1. Press End Caps in place on the exposed ends of the profile.



Recommended space requirements