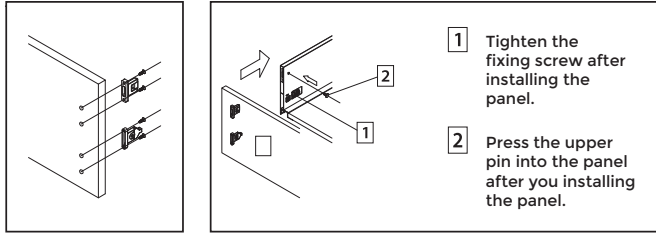
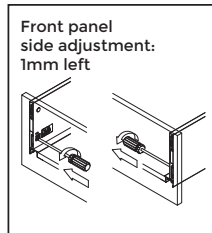
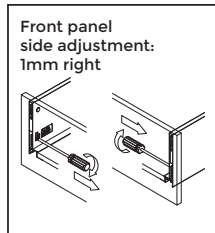
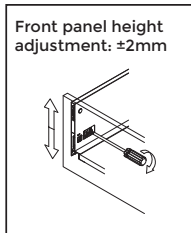
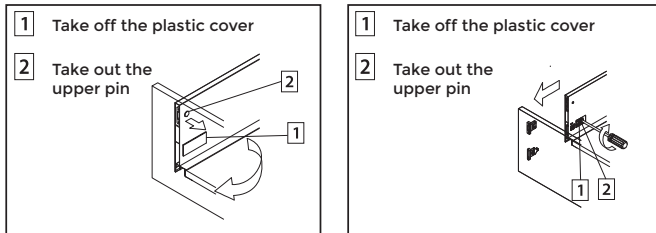


Assembly & Installation of StarBox

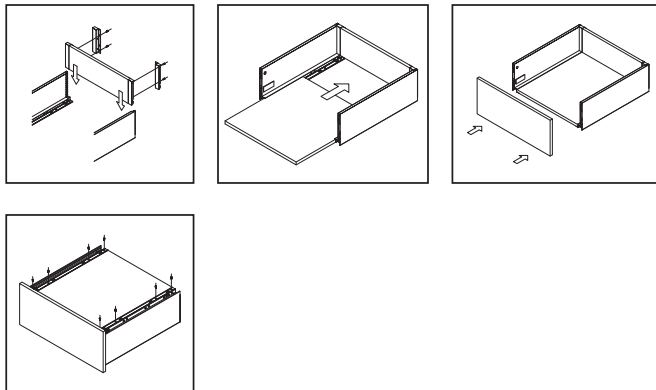
Mounting Front Fixing Brackets



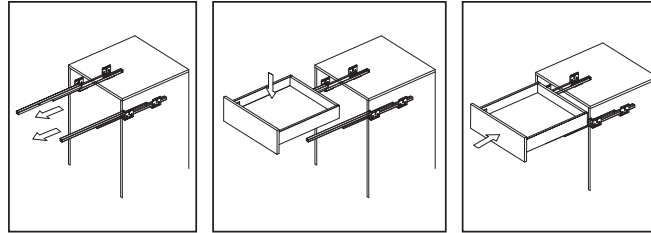
Removing Front Panel



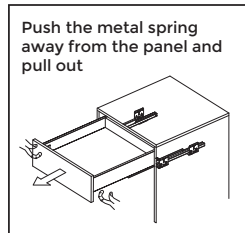
Mounting the drawer



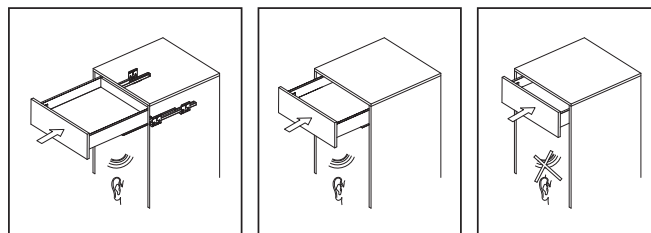
Installing the drawer



Removing the drawer



Function of the damper



DIY Installation Guide

StarBox Slimline

(The system does not include the drawer back & base)

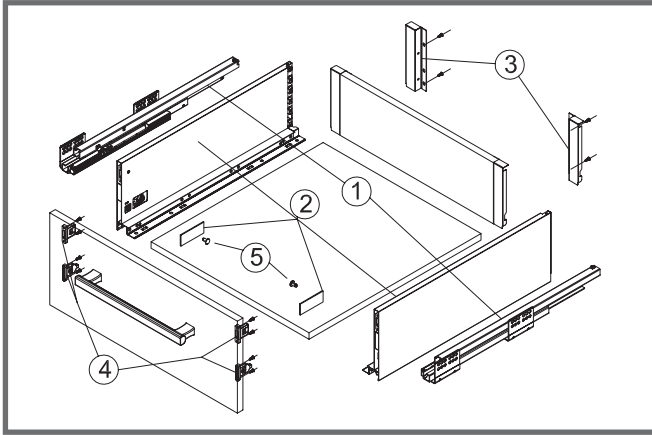
Available in Grey & White



Gelmar

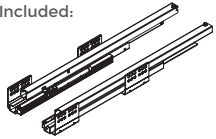
StarBox Slimline Drawer

(The system does not include the drawer back & base)

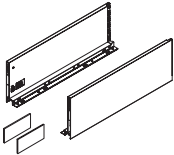


Slim Starbox
- 88mm (6310 - Grey) (6530 - White)
- 171mm (6311 - Grey) (6531 - White)

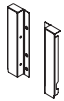
Included:



1) 500mm Guides - Left & Right



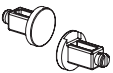
2) 500 mm Drawer Sides & Decorative Caps - Left & Right



3) Back Connectors - Left & Right



4) Front Connectors - Left & Right



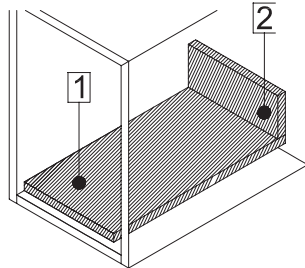
5) Upper Pins

Features:

- Length: 500mm
- The drawer side board is available in 88mm & 171mm high
- Drawer width can be freely designed with automatic error adjustment.
- 35kg weight capacity
- Built-in damper

Bottom and back panel measurements

(The system does not include the drawer back & base)

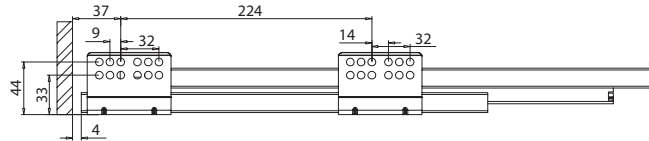


1 Bottom Panel width:
Inside Cabinet width - 75 ± 0.5
Bottom Panel Length: 490mm

2 Back Panel height:
Drawer Side height - 20mm
Back Panel width:
Inside cabinet width - 87 ± 0.5

Installation Instructions

Runner Installation



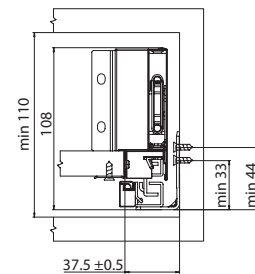
88mm Slimline StarBox - 6310 (Grey) / 6530 (White)

Basic Length	Internal usable drawer depth	Minimum installation depth of drawer	Minimum installation height
500mm	474mm	500mm	110mm

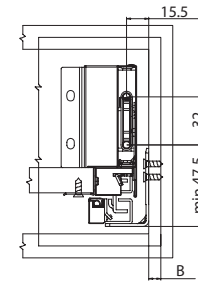
171mm Slimline StarBox - 6311 (Grey) / 6531 (White)

Basic Length	Internal usable drawer depth	Minimum installation depth of drawer	Minimum installation height
500mm	474mm	500mm	192 mm

Inside Cabinet Dimension

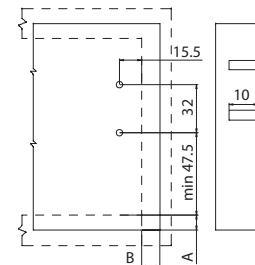


Front Panel Mounting Position



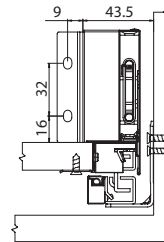
B= Side overlay (user defined)

Front Fixing Bracket Position

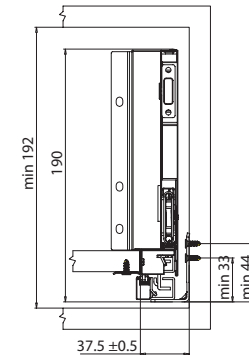


A & B= Side overlay (user defined)

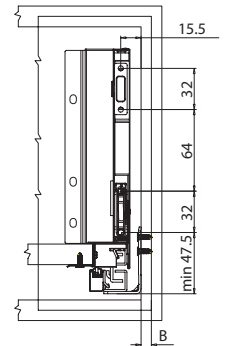
Back Panel Mounting Position



Inside Cabinet Dimension

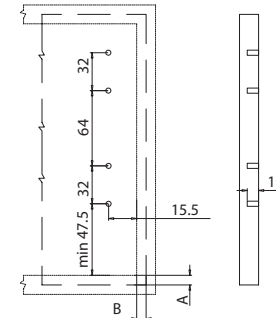


Front Panel Mounting Position



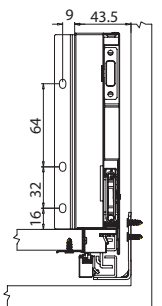
B= Side overlay (user defined)

Front Fixing Bracket Position



A & B= Side overlay (user defined)

Back Panel Mounting Position



Disclaimer: If this product is not installed according to these specifications, Gelmar will not be liable for any damages.