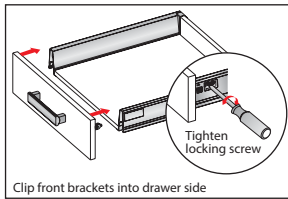
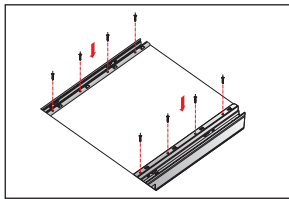
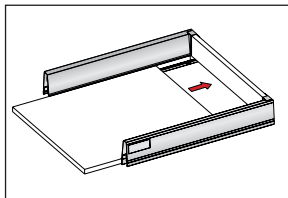
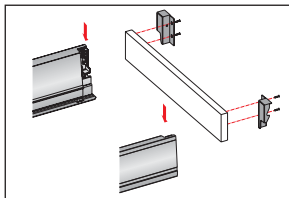


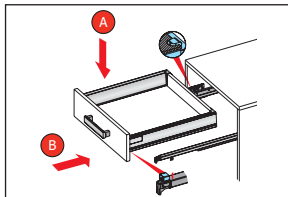
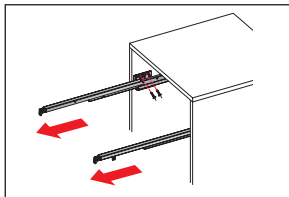
Assembly & Installation of StarBox

Assembling the drawer



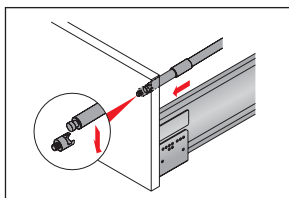
Clip front brackets into drawer side

Installing the drawer

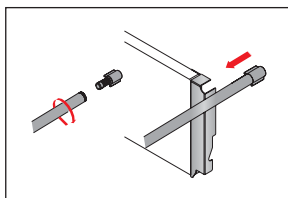


1. Place drawer onto slides (A)
2. Close drawer to shut to engaged (B)

Installation of the Gallery Rail



Screw the front connector of the Gallery Rail to the Internal Drawer Front. Connect the Gallery Rail to the front connector



Connect the back connector of the Gallery Rail to the Rear Panel Connector. Screw the Gallery Rail into the back connector of the Gallery Rail

DIY Installation Guide

Starbox Internal Drawers

(The system does not include the drawer back & base)



Gelmar





White StarBox Internal Drawer with Gallery Rail

(The system does not include the drawer back & base)

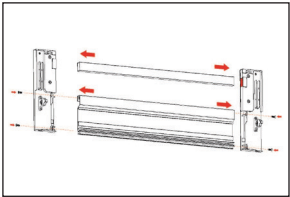


Assembly of the Internal Drawer Front

List of accessories

1  x 2 Drawer Front Fixings	2  x 1 Drawer Front Bottom Panel	3  x 1 Drawer Front Top Panel	 x 4 Self Tapper Screws
---	---	---	---

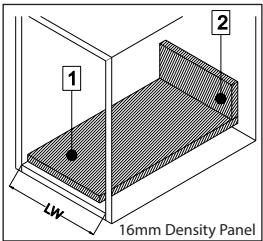
Internal Drawer Front assembly instructions



Insert the Drawer Front Top Panel (3) and Bottom Panel (2) into the Drawer Front Fixings (1). Fix these in place with the Self Tapper Screws (7)

Bottom and back panel measurements

(The system does not include the drawer back & base)



LW = Inside cabinet width = 418mm

1 Bottom Panel
341mm (W) x 490mm (L)

2 Back Panel
68mm (H) x 331mm (W)