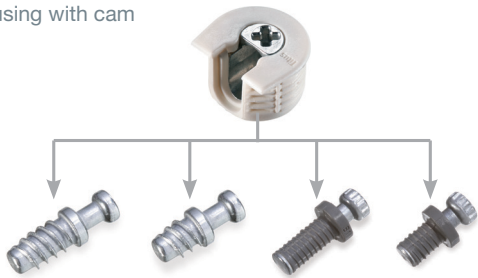


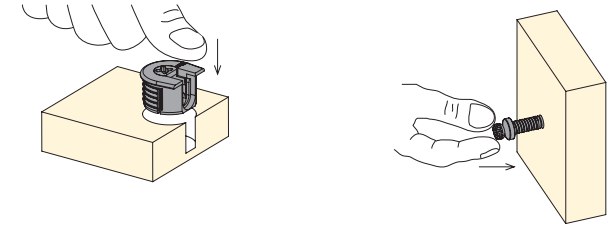
System 6

Quickfit-Expando connectors

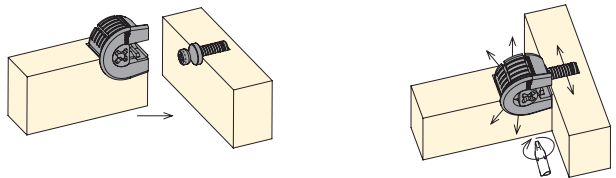
Housing with cam



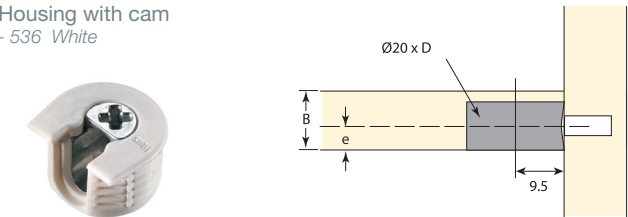
- 1. Press the housing into the face board
- 2. Press the dowel into side panel



- 3. Assemble the panels
- 4. Tighten the joint



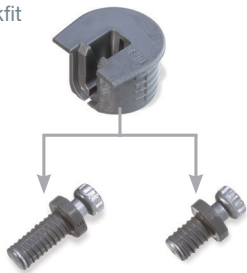
Housing with cam
- 536 White



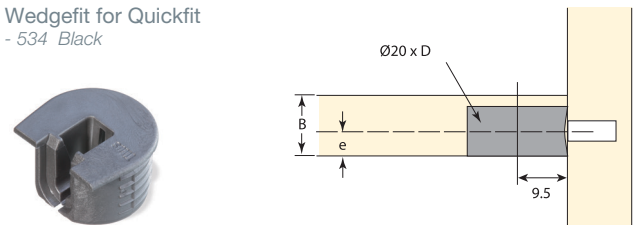
System 6

Quickfit-Expando connectors

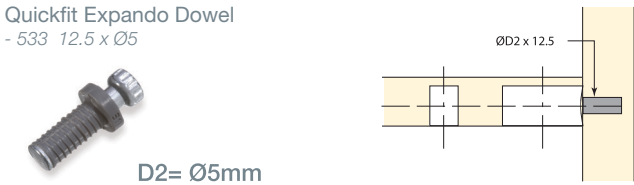
Wedgefit for Quickfit



Wedgefit for Quickfit
- 534 Black



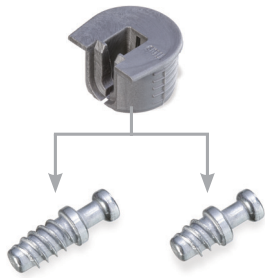
Quickfit Expando Dowel
- 533 12.5 x Ø5



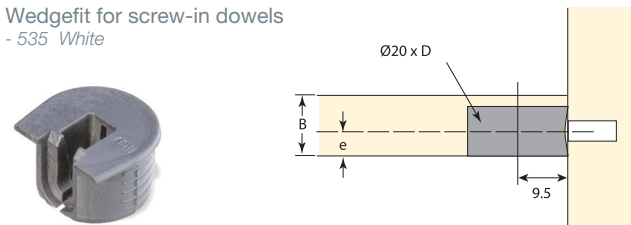
System 6

Quickfit-Expando connectors

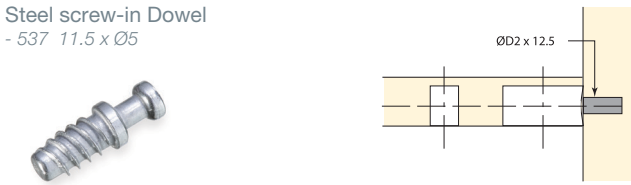
Wedgefit for screw-in dowels



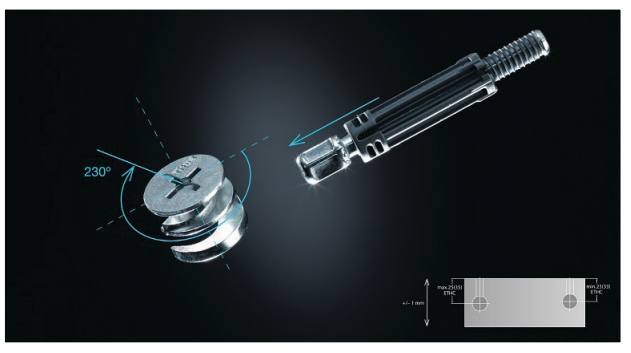
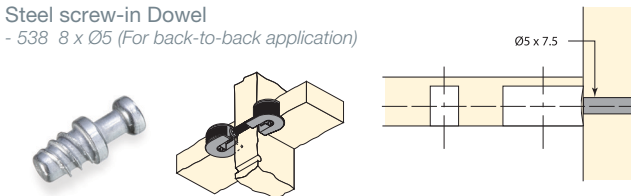
Wedgefit for screw-in dowels
- 535 White



Steel screw-in Dowel
- 537 11.5 x Ø5



Steel screw-in Dowel
- 538 8 x Ø5 (For back-to-back application)

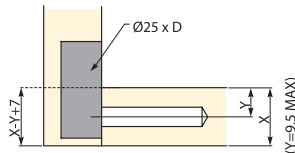


System 3

Fittings for face and edge boring

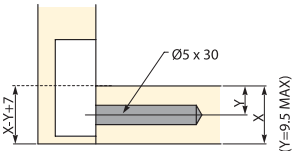
- Two-piece connector
- Half-turn locking system
- Almost full concealment
- Wide tolerances

Housing assembly
- 540 White

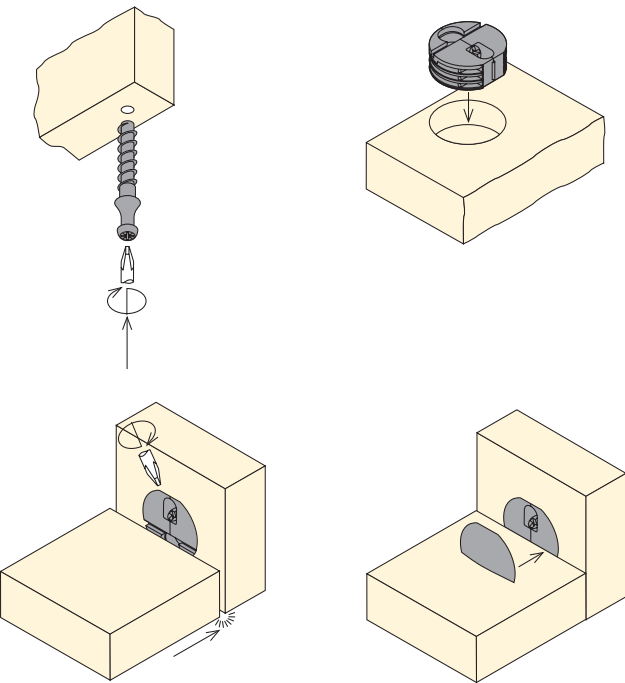


X, Y - depends on board thickness

Screw dowel - Ø5
- 541



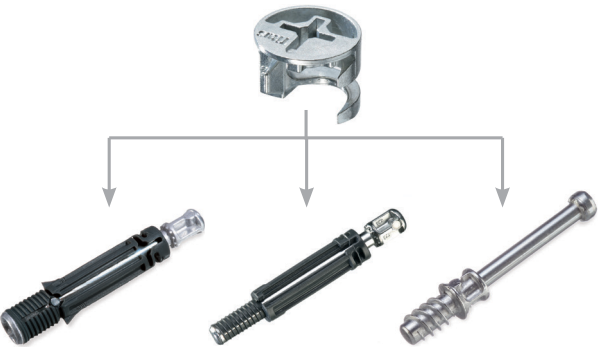
X, Y - depends on board thickness



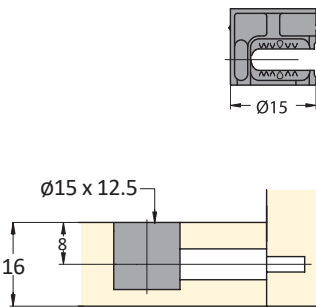
System 5

Cams and dowels

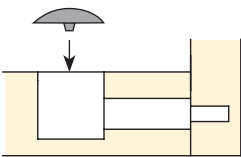
- Ultimate cam strength
- Smooth tightening action
- Broader range of drilling tolerances
- Faster assembly and consistently strong joint
- Cam-retaining pips ensure that the cam is held in panel position prior to assembly



Cam 3000
- 532



Cam Cover Caps
- 516 White
- 517 Brown
- 518 Black
- 519 Oak
- 525 Cherry

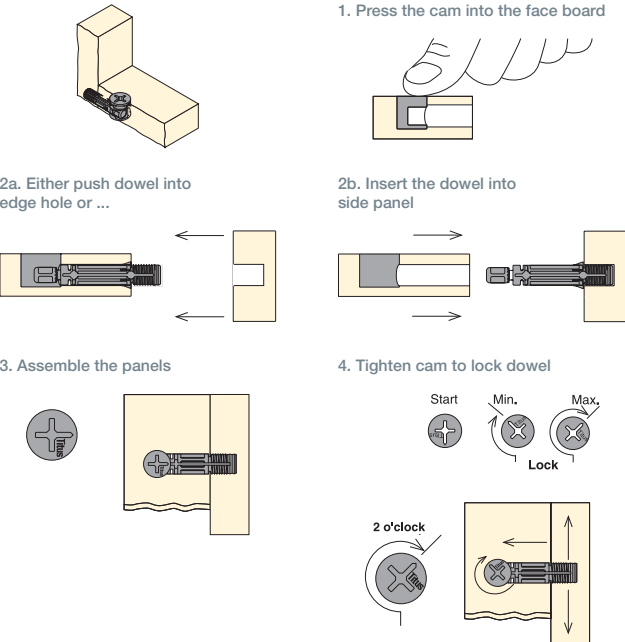


System 5

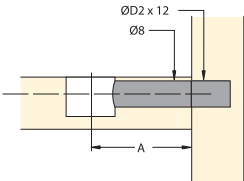
Cams and dowels

- Fastest assembly system on the market
- Tool-free hand insertion
- Creates an optimal joint
- High drilling tolerances (2mm) 33 - 35mm ETHC

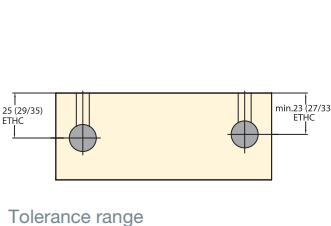
Quickfit - TL2



Quickfit - TL2
- 527



Quickfit - TL2
- 528

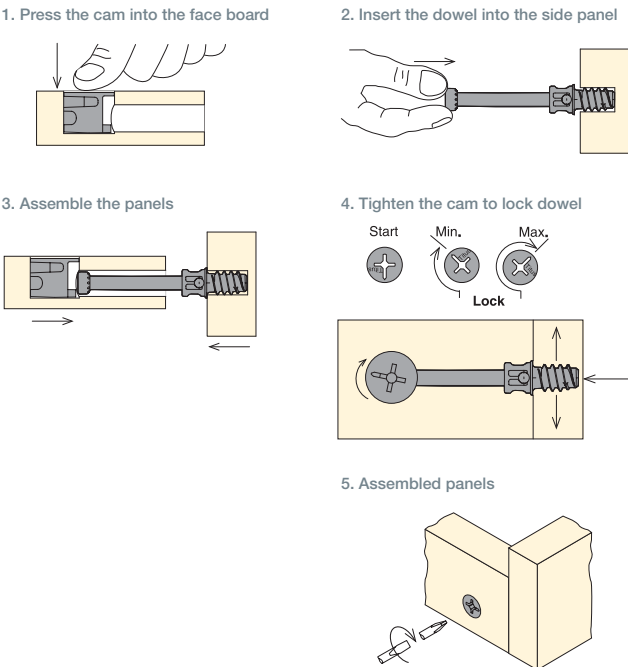


System 5

Cams and dowels

- High quality zinc-steel dowel with greater resistance to torsion and pull-out
- Suitable for use with all Ø12mm and Ø15mm Cam2000 and Cam3000 products
- 'Klix' locking feature provides a strong, vibration proof joint
- Twinstart thread for faster and reliable insertion

Combi dowel



Combi dowel - Ø5
- 530

