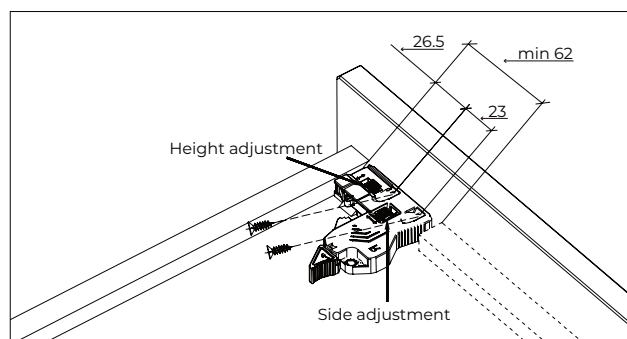
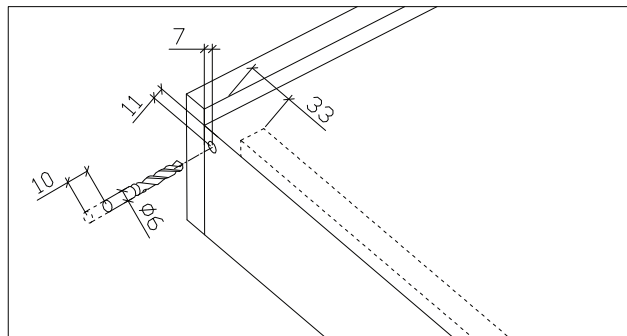


# Undermount Runner with Push Open & Soft Close

## Step 3.

### Prepare the Drawer

- Refer to the drawer back preparation diagram (below).
- Align the locking devices so they sit flush with the drawer bottom and side panels.
- Use the lowest possible angle when driving in the screws to ensure the device sits flush.
- Repeat on both sides of the drawer.



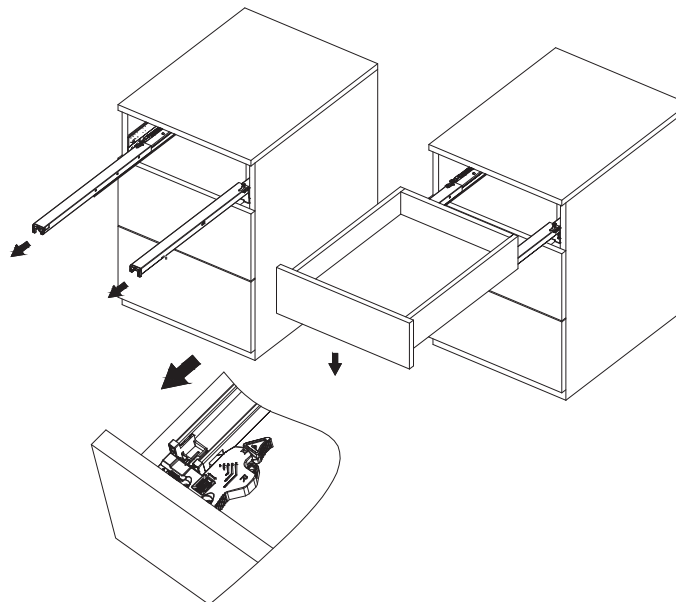
## What makes this Runner so Special?

- **Push Open:** A gentle press on the drawer front is all it takes - no handles required.
- **Soft Close:** Enjoy smooth, silent closing every time.
- **Synchronized Full-Extension Runners:** The drawer glides out evenly and fully for maximum access.
- **High Load Capacity:** Supports up to 35kg with ease.
- **Proven Durability:** Tested to 50,000 cycles for long-lasting performance.
- **Easy Adjustments:** Tool-free vertical and horizontal alignment for quick, precise fitting.

## Step 4.

### Place Drawer on Runners

- Ensure runner installation is complete.
- Pull the runner arms fully forward.
- Lower the drawer onto the runners, making sure it sits securely on both sides.



## Step 5.

### Connect Locking Devices

- Slide the left and right locking device handles into the runner rails.
- Make sure they **click securely** into place.
- Ensure both handles are fully inserted into the slide mechanism, as shown in the diagram.

## Step 6.

### Finalise Installation

- Push the drawer fully into the cabinet - you'll feel slight resistance followed by a secure lock.
- The **Push Open** mechanism is now active.
- Tap the drawer front lightly to open; push again to close softly.

## Step 7.

### Optional: Adjustments

The locking device offers built-in adjustment features for easy fine-tuning:

**Height Adjustment:** Turn the mechanism to raise or lower the drawer (up to 2.5 mm).

**Side Adjustment:** Slide the drawer left or right for precise alignment.

Refer to the locking device close-up (alongside) for exact adjustment points.

## Undermount Runners with Soft Close Push Open



### Tools & Materials Needed:

- Push-open + soft-close undermount runners (left & right)
- 2D locking devices (left & right)
- Screws (recommended: 6 x 16mm undercut)
- Screwdriver or drill
- Measuring tape or ruler

### Product Information:

| Item No. | Slide Length (mm) | Drawer Length (mm) | Pull-out Length (mm) | Min. Cabinet Depth (mm) |
|----------|-------------------|--------------------|----------------------|-------------------------|
| 7025     | 403mm             | 400mm              | 375mm                | 415mm                   |
| 7026     | 453mm             | 450mm              | 425mm                | 465mm                   |
| 7035     | 503mm             | 500mm              | 475mm                | 515mm                   |

### Abbreviations:

NL = Nominal length of the drawer runner/slide  
 LW = Internal cabinet width (inside clear width between sides)  
 LT = Minimum internal cabinet depth required  
 X = Thickness of the drawer front (only for internal drawers)  
 SKL = Drawer Length  
 SKW = Drawer Width

### Step 1.

#### Prepare the Cabinet

Follow these formulas to calculate the minimum cabinet depth, drawer length, and drawer width.

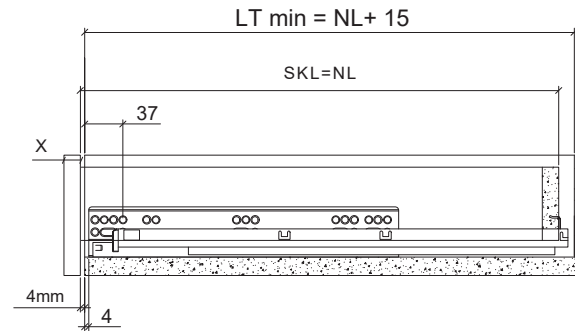
#### Standard (External) Drawer Installation

- Minimum Cabinet Depth (LT) = NL + 15mm
- Drawer Length (SKL) = NL
- Drawer Width (SKW) = LW - 42mm (-1.0mm tolerance)

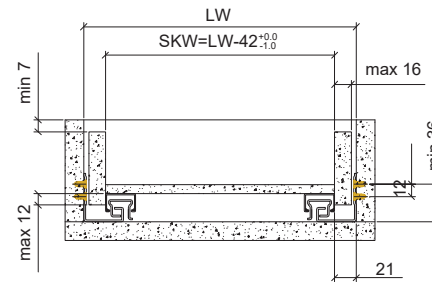
#### Internal Drawer Installation

- Minimum Cabinet Depth (LT) = NL + 15mm + X  
(where X = drawer front thickness)
- Drawer Length (SKL) = NL
- Drawer Width (SKW) = LW - 42mm (-1.0mm tolerance)

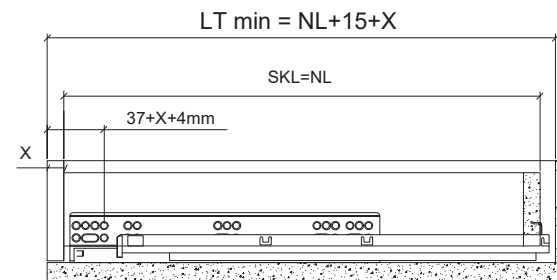
## Standard (External) Drawer Installation



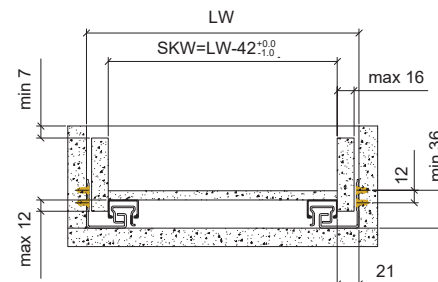
### Space Requirement in Cabinet



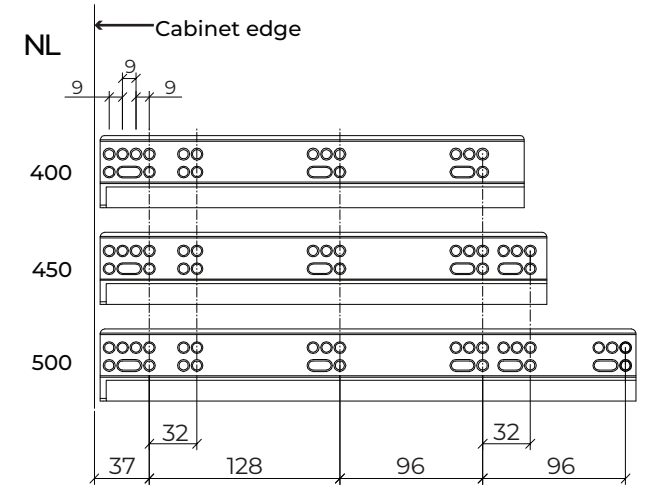
## Internal Drawer Installation



### Space Requirement in Cabinet



## Hole Pattern for Installation



### Step 2.

#### Mark and Install Runners in the Cabinet

- Refer to the screw hole positions diagram (above) and measure carefully from the front edge of the cabinet.
- Fix both the left and right runners securely and level on the cabinet side walls.

**Tip:** Use a spirit level to ensure the runners are perfectly aligned for smooth push-open action.

