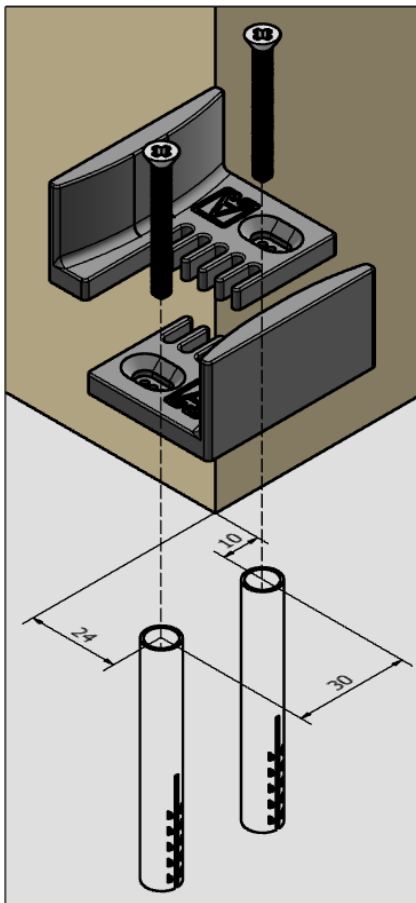
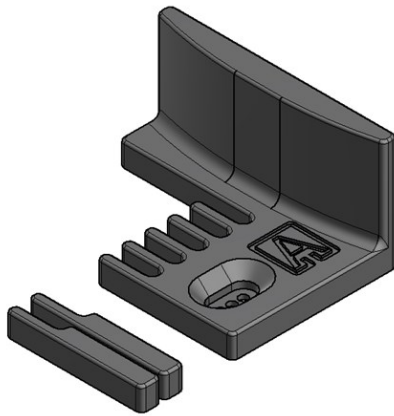


# INSTALLATION INSTRUCTIONS

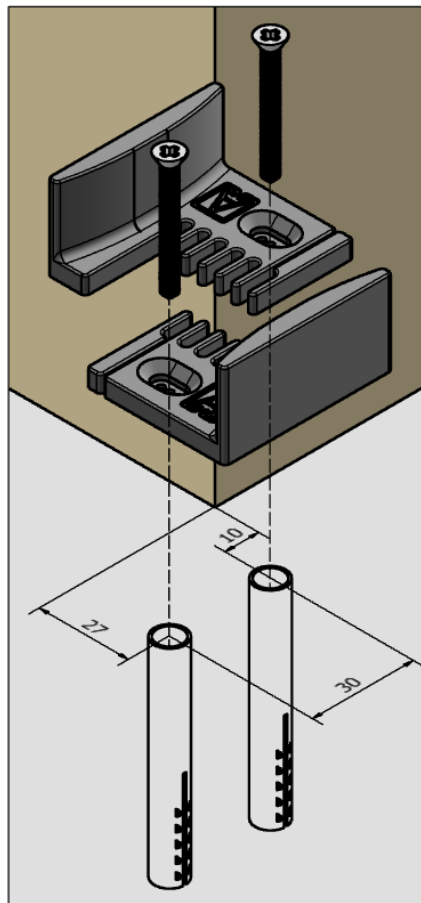
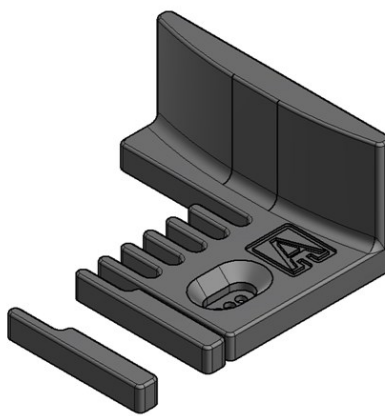
## Comb Guide

- Comb Guide accommodates 35mm, 40mm, and 44mm door thicknesses
  - 35mm thick door: Reduce both extension fingers on both parts, carefully cutting with a utility knife.
  - 40mm thick door: Reduce one extension finger on both parts, carefully cutting with a utility knife.
  - 45mm thick door: Use as is, do not reduce.
- Interlock both halves of the comb guide to form one guide and place the guide at the start of the opening, ensuring the guide will engage the door in both the open and closed positions.
- Plumb the door with a spirit level and align the guide to the wall using the measurements below as a reference.
  - The measurement from the face of the wall to the line of the holes is based on the hanger lining up with the edge of the door.
  - 35mm thick door: The hole positions closest to the upstand of the guide half must be used.
  - 40mm thick door: The centre hole positions must be used.
  - 44mm thick door: The hole positions furthest from the upstand of the guide half must be used.
  - The two holes should run on the centre-line of the door leaf.
- Mark and drill the two fixing holes and screw the comb guide into position using the two 6x30 wall plugs and 8x32 screws.

### 35mm Door



### 40mm Door



### 44mm Door

