

Installation instructions

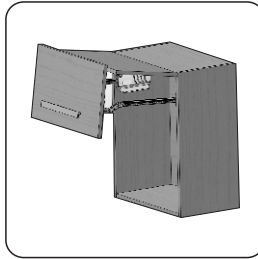
Dear Customer:

This stay was designed and manufactured with our utmost care in order to give you a high performance and smooth operation on a long-term basis.

We ask you to follow these instructions for best possible results and carefree use throughout its lifetime.

Safety recommendations:

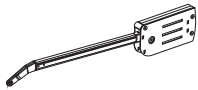
- We recommend for the installation to be made by a professional carpenter or installer.
- This stay contains some very strong springs: for your own safety, do not fold the arm before it is securely attached to the door. Failure to observe this advice may lead to bodily injury.
- Do not disassemble the arm or body of the stay.
- Please use this stay only within the specifications shown in this manual.
- Standard temperature of use is 0 to 40°C.



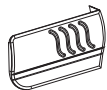
Warranty

- This stay was produced with a particular attention to its quality.
- Should you however experience any difficulty, please refer to our company. The liability of our company is limited to the replacement or repair of the stay itself.
- We cannot accept any liability for damage incurred while using this stay.
- Standard warranty is for one-year period from the date of shipment.

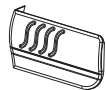
Parts list



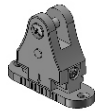
- Body: 2 pieces



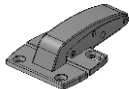
- Body cover (left): 1 piece



- Body cover (right): 1 piece



- Mounting plate: 2 pieces



- Center hinge: 2 pieces



- Body installation screws (4*35): 8 pieces



- Center hinge installation screws (3.5*14): 8 pieces



- Mounting plate installation screws (5*18): 4 pieces

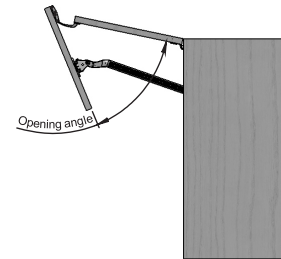
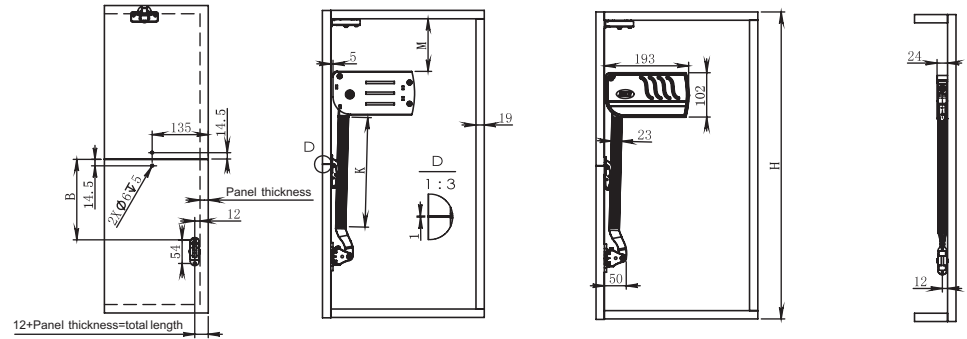


- Mounting plate installation column (5.9*22.3): 2 pieces

- installation template: 6 pieces

- installation instructions, English version (this book): 1 piece

Installation drawing



	Reference Data								
Cabinet Height: H	600	650	700	750	800	850	900	950	1000
Installation Size: M	100	150	100	120	200	250	200	250	250
Installation Size: B	163	188	213	208	263	288	263	288	313
Alu.Bar Length: K	200	200	300	300	300	300	350	350	400

Note:

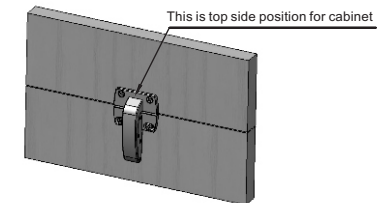
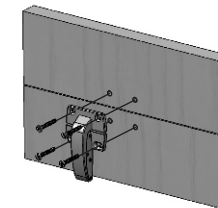
1. If height of up and down panels is not the same, installation data is different
2. If for built-in type cabinet, installation data is different
3. Inward mounting about 30mm can change the opening angle

Unit: mm

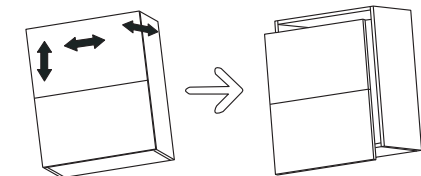
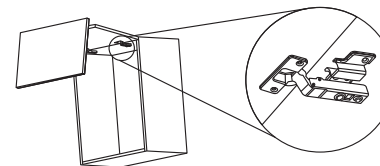
Instruction: Above data are only used with installation template.

Installation

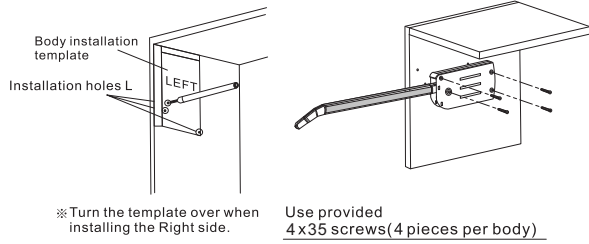
1 Center hinge installation



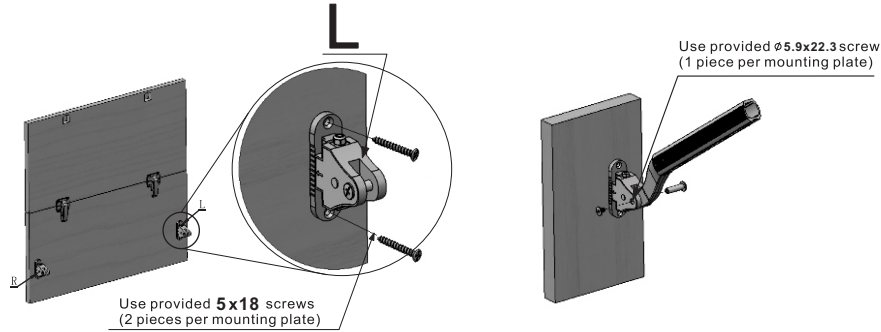
2 Door adjustment



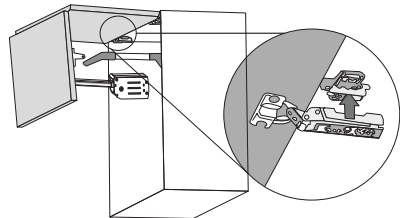
3 Body installation



4 Mounting plate installation

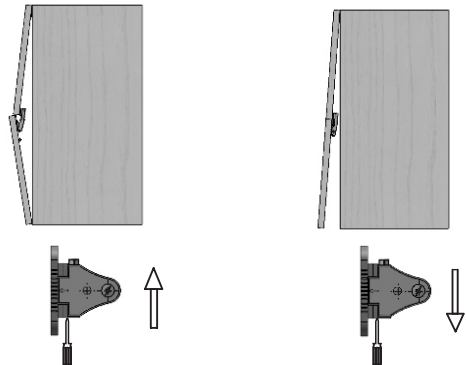


5 Door installation



- ⚠ Ensure the top door hinges are securely installed so that the door will not drop.
- ⚠ Ensure that all the screws are securely fastened.

6 Mounting plate adjustment

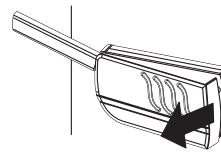


Check the movement by opening and closing the door after all the adjustments

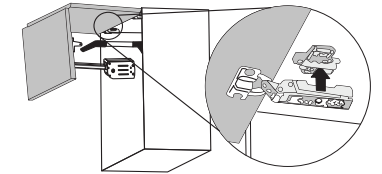
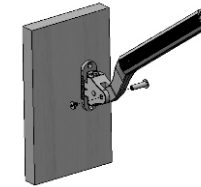
7 Cover installation



Cover removal



Door removal



Mounting plate re-adjustment

