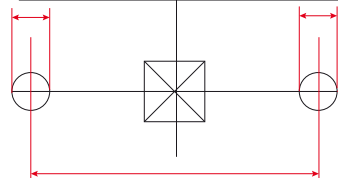
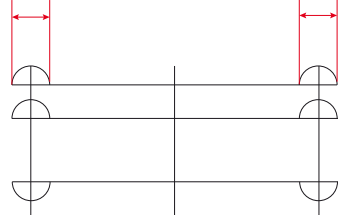


5mm 5mm



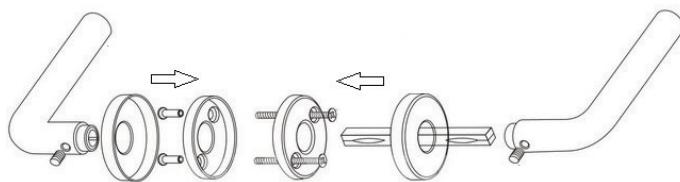
38mm

38mm 5mm 5mm

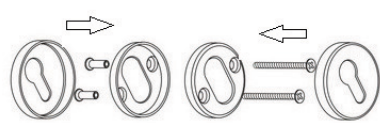


WC = 72mm

BB, PZ = 80 mm

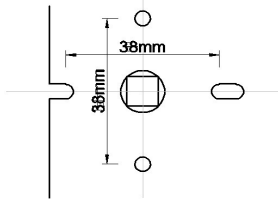


- 4x
- 4x
- 2x
- 1x



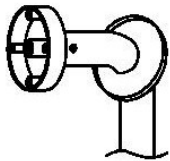
Fitting Instructions for Round Rose Lever Furniture

Fig. 1



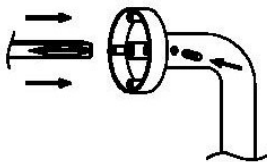
Handles can be bolted either vertically or horizontally with the fixings supplied. It is necessary to use locks and latches with a bolt through facility for horizontal fixings.

Fig. 2



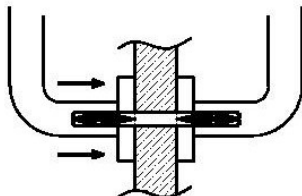
Remove outer rose and slide carefully off, ensuring not to damage the lever finish in the process to view fixing holes.

Fig. 3



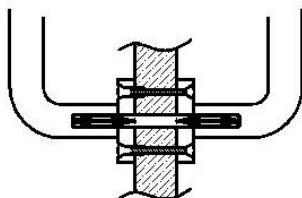
Locate spindle in one lever ensuring, if applicable that the spindle groove is aligned with the grub screw hole in the lever shank. Once lever is suitably aligned secure it in place with the grub screw provided, ensure there is sufficient spindle projection so it can be located in the other handle.

Fig. 4



Insert spindle through lock/latch follower ensuring that lever is correct way up in respect of design and spring action, so that the inner rose is flat against the face of the door.

Fig. 5



Insert male bolts through inner rose so they locate cleanly with female bolt from the other side. Tighten bolts ensuring threads do not cross. Replace the roses